

Geek of the Road

WinFix Installation Instructions v1.1

It is common for mk2 Toyota MR2s to have poorly fitting window controls because owners break the clip that holds them in place by trying to remove the controls incorrectly. The WinFix corrects this very easily.

Note on 3D Printed Parts:

The WinFix is a 3D printed part. The process of printing parts, particularly where supports are required, may result in minor aesthetic blemishes which will not affect the part's function. 3D printed parts are naturally stronger in some directions than others and the WinFix is printed in an orientation to ensure more than sufficient strength to fulfil it's intended purpose. As with an injection moulded part of a similar design, it can be broken by hand if deliberately abused.

Tools required:

- Interior pry tool or flathead screwdriver
- Crosshead screwdriver (Driver's side only)
- Epoxy Resin (Passenger side only)
- Craft Knife

Instructions:

Professional installation recommended. Geek of the Road Ltd accepts no liability for incidental damage caused by improper or careless application of these instructions.

Video guide and colour instructions available at www.geekoftheroad.co.uk.

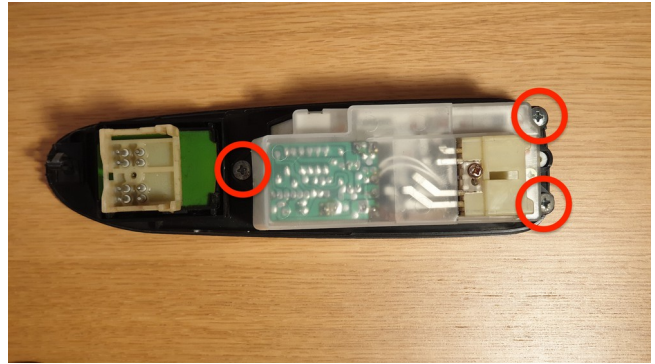
1. Using a pry tool or flat head screwdriver, carefully pry upwards at the front of the driver's side window control then remove from door card.

Tip: At the best point the pry up from, controls are approx 1cm (3/8") thick.

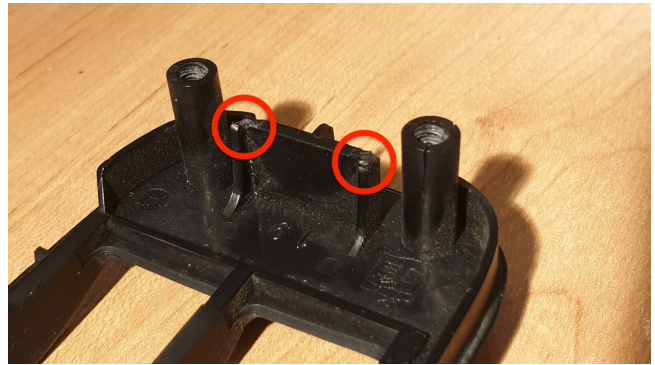
2. Disconnect wiring plugs from control unit, noting that the forward plug is pulled down.



3. **Driver's side only:**
On the underside of the controls, undo the three screws holding the switchgear to the faceplate.



4. Using a utility knife, carefully remove any remnant of the broken clip, leaving a relatively straight edge.

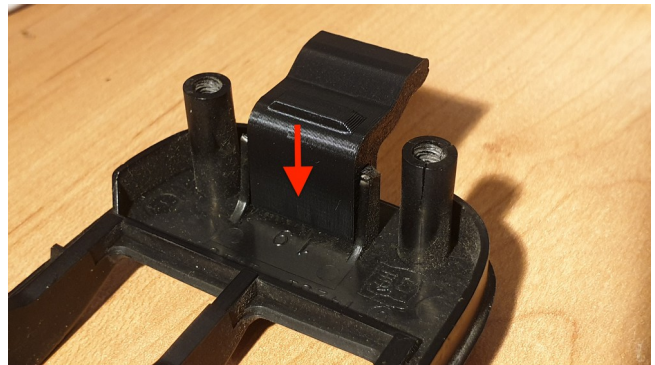


5. Fit the WinFix in place of the broken clip.

Passenger side only:

When fitting, add epoxy resin in the slot on the WinFix before fitting to the passenger side. Ensure the resin has cured completely solid before continuing.

On the driver's side the switchgear secures the WinFix in place, so epoxy resin is not required.



6. **Driver's side only:**
Reattach the switchgear to the faceplate, securing the WinFix in place.

Warning: Do not to overtighten the screws as this risks splitting the screw holes under the faceplate, as visible in the photos above.

7. Plug wiring back into window control unit.
8. Refit the window controls. Place the rear section into the door card first and then secure by pressing firmly down at the front.



WinFix is modified from a design by Thingiverse user Terranova, published under Creative Commons Attribution 4.0 International (CC BY)